

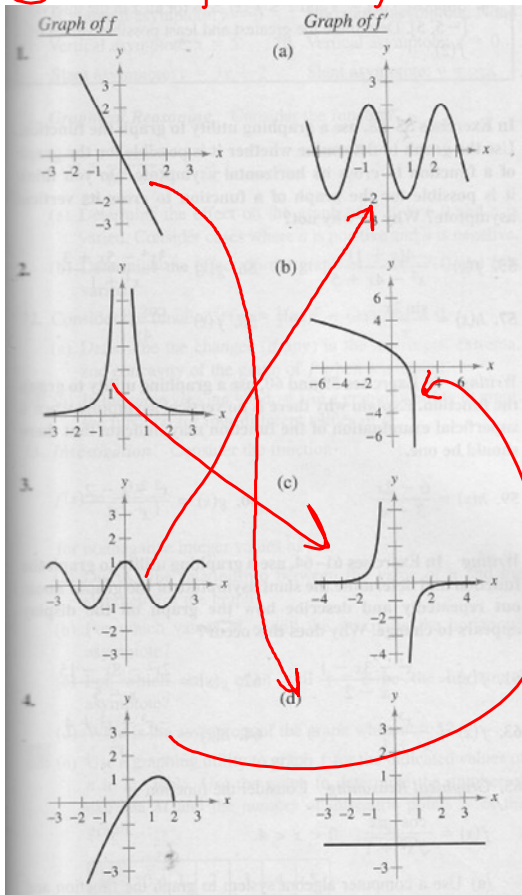
28 Nov 11

• DAY 44 •

- WARM-UP
- Peruse the new Agenda
- Quiz # 7 & extra practice problem
- PRACTICE WORKSHOP 9a
- Homework Assignment

★ end of page

① Match  $f$  to its  $f'$

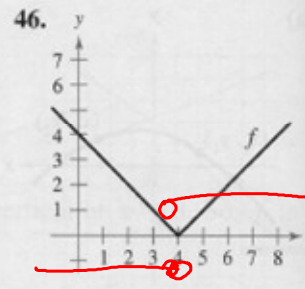
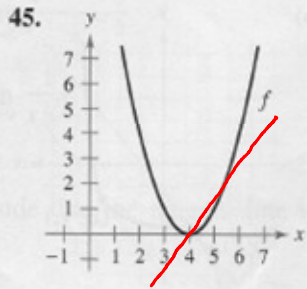
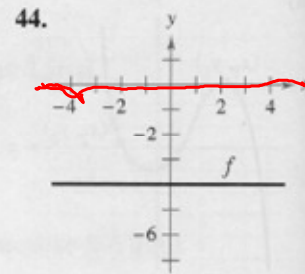
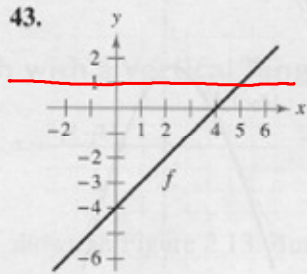


② Sketch  $f'$

warm-up

### Writing About Concepts

In Exercises 43–46, sketch the graph of  $f'$ . Explain how you found your answer.



47. Sketch a graph of a function whose derivative is always negative.

★ end of page

# ★ Homework Assignment ★

assign hw

- AP Calculus Multiple Choice Practice Workshop 9a  
finish #'s 1 → 22

---

## Optional

- Quiz practice FRQ problem
- READ & TAKE notes on HRW 5-1 THROUGH 5-6
- study for quiz #7

★ end of page